

# ACT 446 Dual Cable Location Protector

## Surge Protector System



### ▶ ACT 446 Dual Cable Location Outdoor/Indoor Protectors

The ACT 446, as part of the ACT 44X Cable Locating Protection Family, can be installed for both indoors or outdoor applications. The solid-state hybrid surge protection system is installed between the cable sheath and earth ground. Their primary function is to increase the cable locating tone range and efficiency and protect buried cable and personnel from high-energy surges. This unit may be installed either underground (waterproof), above ground (weather proof) or pedestal mounted. Proper installation and location of these devices allows greater than 75 miles of cable location from one transmitter.

### ▶ RECOMMENDED LOCATIONS

- Buried Fiber Locations
- Pedestal Locations
- Indoor Locations

### ▶ FEATURES AND BENEFITS

- Extends Cable Locations over 75 miles
- MOV/Gas Tube Hybrid Technology
- 5-Year Standard Warranty

### ▶ STANDARDS MET

- Safety – Meets UL497
- ANSI/IEEE C62.41, C62.45

### ▶ 3RD PARTY TESTED

### ▶ PART NUMBERS

Model	Enclosure Type	System
ACT 446-XXX-	212	Dual Protector in Weatherproof enclosure with shorting bar 4"x4"x2" Enclosure
ACT 446-XXX-	302	Dual protector for Waterproof (Potted) with 6' 6 awg cable stubs 4"x4"x2" Enclosure
ACT 446-XXX-	400	Dual Protector for pedestal mount 3"x3"x2" Enclosure Comes WITHOUT shorting bar
ACT 446-XXX-	410	Dual Protector with shorting bar for pedestal mount 3"x3"x2" Enclosure

Part Number Example: ACT 446-150-410

\*Custom voltage and cable configurations are available

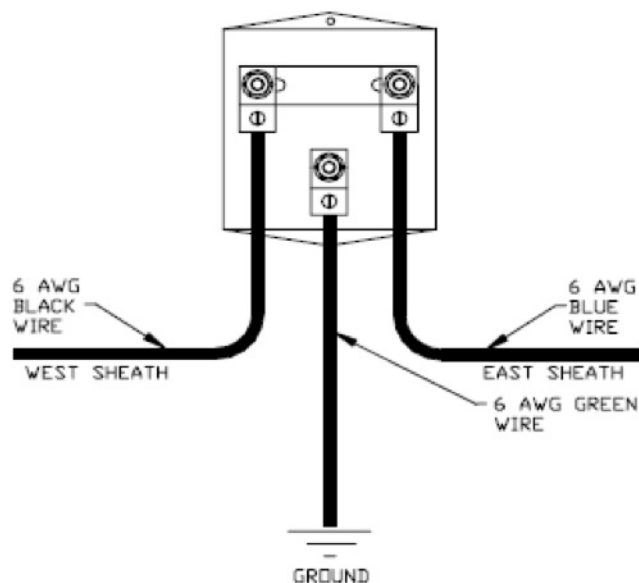
ACT 446M is optional mounting plate available for ACT 446 - 400 series products

\*Also use ACT 4400-150 System

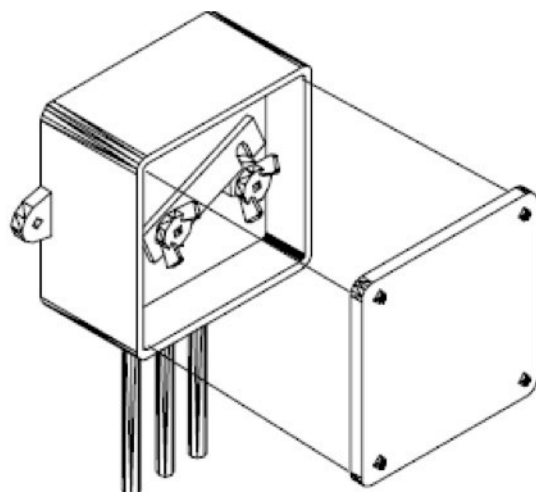
# ACT 446 Dual Cable Location Protectors

Surge Protector System

## ACT 446-150-410 – Pedestal Mount



## Weather Proof Enclosure



ACT 446-XXX-212

## TECHNICAL INFORMATION

### PHYSICAL SPECIFICATIONS

**ACT 446-XXX-2YZ** family Installed in 4"x4"x 2" weather resistant enclosures

**ACT 446-XXX-3YZ** family Installed in 4"x4"x2" waterproof closures

**ACT 446-XXX-4YZ** families Installed in a 3"x3"x2" indoor enclosure  
*Requires installation inside a pedestal if installed outside*

**XXX** – Option signifies voltage application (050V, 150V, 350V)

**Y** – Option "0" No shorting bar "1" with shorting bar

**Z** – Option "0" No cable "2" 6 foot of 6 AWG stranded cable (Black & Green)

### ELECTRICAL SPECIFICATIONS

Voltage Applications RMS: 50V, 150V, 350V, 650V

Clamping Voltage (@ 1mA DC):  
(+10% voltage variance) 95V, 210V, 430V, 720V

Peak Current (8x20μS): 42,000 Amps

Energy Dissipation (10x1000μS): 1600 joules

Response Time: 1.5 Nanoseconds

Capacitance @ 5KHz: 4004pf

**ACT 446 M option is a 16 awg aluminum back mounting plate for the ACT 446-150-410 module. Mounting Plate sold separately.**