

ACT TransShield 452 Family

A Wall Mounted Surge Protection Device



- ▶ Power Quality is more important today than ever before and that means not just any surge protector can be relied on to protect your sensitive equipment.

The ACT TransShield 452 type design has been protecting millions of dollars of telecom and commercial equipment for over 20 years and is the perfect product to protect your electrical and electronic environments.

The TransShield protection products are a cost effective solution for any critical location in the facility from high risk sites (Telecom & Petroleum) to the Point of Use equipment like your computers.

When installed with the ACT Surge Stryker 455, you can count on a front to back facility protection system.

▶ FEATURES AND BENEFITS

- 4 Modes of Discrete Protection (L-N, N-G)
- 10 Modes of Protection (L-N, L-G, N-G, L-L)
- Green Status indicating Lights per phase
- NO/NC Form C Dry Contact option for remote monitoring
- Individually Fused and Protected MOV Technology
- 1-Year Standard Warranty

▶ STANDARDS MET

- Safety – ETL Recognized to UL1449 4th Edition
- ANSI/IEEE C62.41, C62.45
- ANSI/NFPA 70 National Electrical Code

▶ 3RD PARTY TESTED

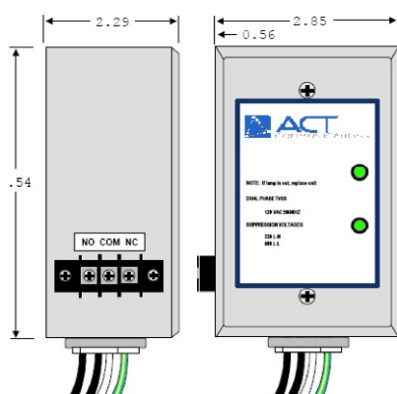
- Survives 1,000 (C3 6kV / 3kA)

▶ RECOMMENDED LOCATION

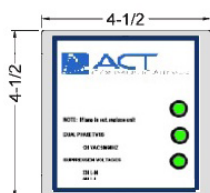
- Type 2
- Cell Sites, Well Pumps / Cat C
- Distribution Equipment / Cat B
- Branch Panels / Cat B
- Point of Use / Cat A

ACT TransShield 452 Family

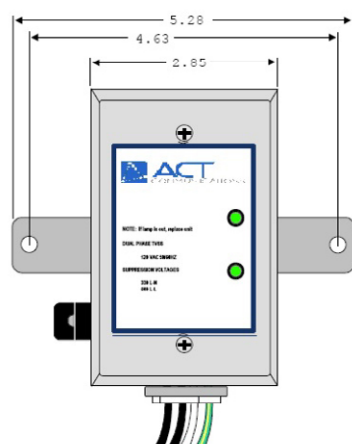
DIMENSIONS



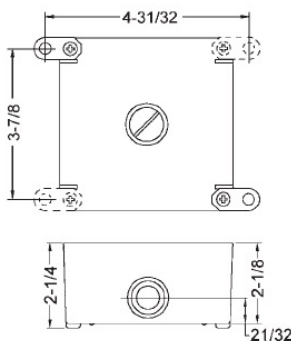
ACT 452 Single and Split Phase



ACT 452 3-Phase Unit



ACT 452 with "W" Wall mounting option



TECHNICAL INFORMATION

MECHANICAL SPECIFICATIONS

Dimensions	See Drawing
Weight	1.7 lbs.
Enclosure	NEMA 3R
Operating Temp	-40F to +140F -40C to +65C
Non-condensing Humidity	5% to 95%

ELECTRICAL SPECIFICATIONS

Connection Method	Parallel
Protection Modes (10 Modes)	L-N, L-G, L-L, N-G.
Pre-wired	36" stranded #10 AWG
Status Indicators	Green LED
Optional Alarm Relay Contacts	Form C NC & NO

Model	System Voltage	System Configuration	Protect Mode	MCOV	SVR	VPR
452-120-040	120V	2 Wire + G	L-N	150	500	700
			L-G	300	600	1200
452-240-040	240V	2 Wire + G	L-N	320	800	1000
			L-G	640	1300	1800
452-480-040	480	2 Wire + G	L-N	550	1500	2500
			L-G	1200	3000	3200
452-120S-040	120/240	3 Wire + G	L-N	150	500	700
			L-L	300	600	1200
452-240S-040	240/480	3 Wire + G	L-N	320	800	1000
			L-L	640	1300	1800
452-120Y-040	120/208	4 Wire + G	L-N	150	500	700
			L-G	300	600	1200
452-277Y-040	277/480	4 Wire + G	L-N	320	800	1000
			L-G	640	1300	1800
452-480D-040	480	3 Wire + G	L-G	550	3000	1800
			L-L	1150	1500	3000

EXAMPLE: ACT 452-120-040

OPTIONS

Surge Rating Per Mode	040 = 40kA
Remote Alarms	-R NC / NO Form C Contacts
Mounting Style	-S Side (Bottom) Fed – Std product
	-B Back Fed Option
	-W Wall Mounted Option