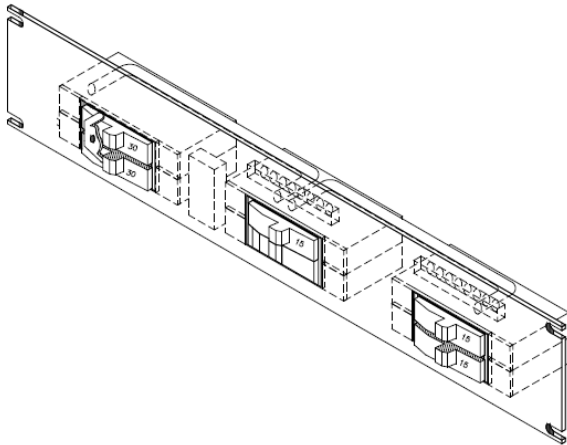


# ACT 482 2U Rack Mounted AC Load Panel Family

## Power Distribution Panel



**ACT 482-120-6002-N00**

▶ In today's applications, rack mounted power distribution panels must be flexible to handle the many changing customer needs. The ACT 482 2U Power Distribution Panels offer a wide range of options to allow specific customization at off the shelf pricing.

Optional features include number and size of breakers, surge protection, power filtering and end terminated power cables for your generator and downstream loads.

### ▶ RECOMMENDED LOCATION

- Telecom Cabinets
- Waste Water Treatment Cabinets
- Remote Shelters or Cabinets

### ▶ FEATURES AND BENEFITS

- Selectable Breaker Quantity and Size
- Generator / Main interlock mechanism
- Square D QOU type breakers
- Finished Aluminum – light weight while providing strength
- GFI outlet option allows technicians an easy access point for power
- 2 –Year Standard Warranty

### ▶ STANDARDS MET

- Safety – Panel Designed to UL 67
- Breakers – UL 489 Listed – CSA 22.2 #5.1
- IEEE 1100
- ANSI/IEEE C62.41, C62.45
- ANSI/NFPA 70 National Electrical Code

### ▶ SPECIFICATIONS

#### MECHANICAL

Dimensions:	19" x 3.468" x 5.0"
Weight:	4.5 lbs
Operating Temp:	-40F to 140F
Non-condensing humidity:	5% to 95%

#### ELECTRICAL

Wire Size:	#14-3 AWG
Number of poles/breakers:	1-Pole
Short Circuit Current Rating:	10kA@120/240 VAC
Breaker Type:	Square D QOU
Approval on Breakers:	UL 489 Listed, CSA 22.2 #5.1 Certified

Ampere Rating:	30, 20, 15 Amp
Cord Connections:	All cords and connectors specifications are considered custom and must be specified by the customer in writing.

# ACT 482 2U Rack Mounted AC Load Panel

**CAUTION:** The ACT 482 ground bus must be connected to cabinet ground plate. All wiring should be according to NFPA 70 National Electric Code.

*Each panel is shipped with a breaker interlock between the MAIN and Generator breaker, this interlock must never be defeated or removed. To do so would present a dangerous hazard to the user or the user's equipment*

**INSTALLATION NOTES** Reference Figure 2.0

1. All neutral lines must terminate to the Neutral bus bar
2. All Ground lines must be terminated to the Ground bus bar
3. The lacing bar (not shown in drawing) is to be used to conveniently route and secure the cables and wiring to the power panel
4. Cable length must allow for proper bend radius per UL 67
5. Cable routing and cable dress to termination points must comply with UL 67

ACT 482-120-6002-N00

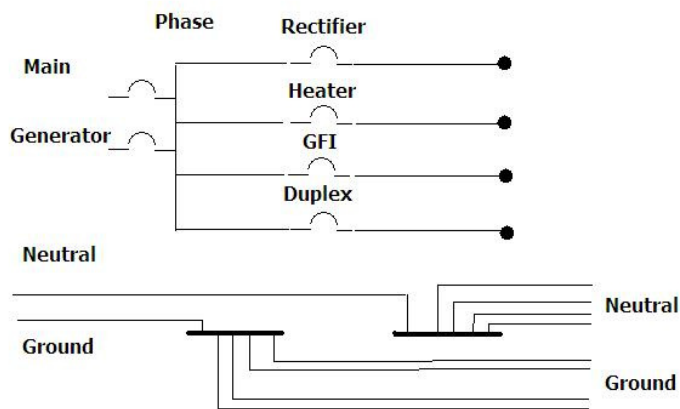


FIGURE 1.0

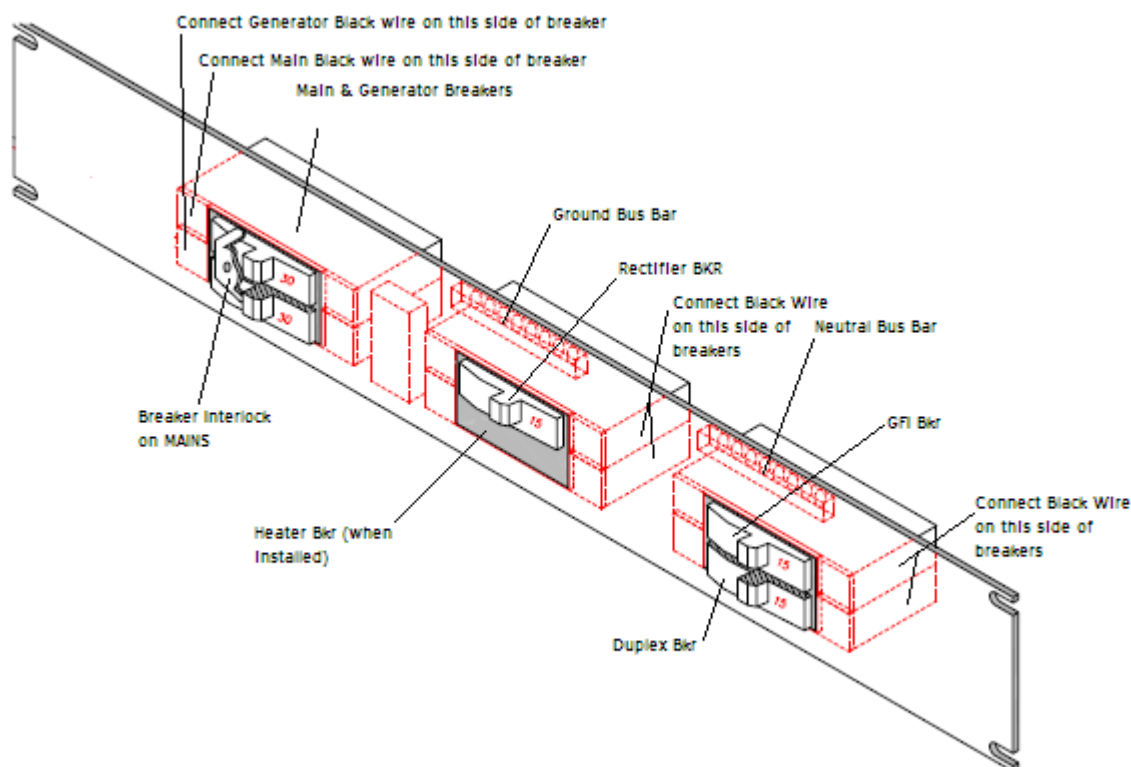


FIGURE 2.0